

# Information sheet for Early Career Researcher chapter of the ASA

## What is the Early Career Researcher chapter?

We are a new chapter of the Astronomical Society of Australia (ASA) that will act to support the needs and development of Early Career Researchers in the Australian astronomy community. We will achieve these goals through the following priorities:

1. **Inform** members about opportunities for professional training and support
2. Provide **training** for members in areas of professional development
3. **Connect** members with each other, and also with senior researcher mentors, providing a support network
4. Acting as a **advocacy and representation** body for its members

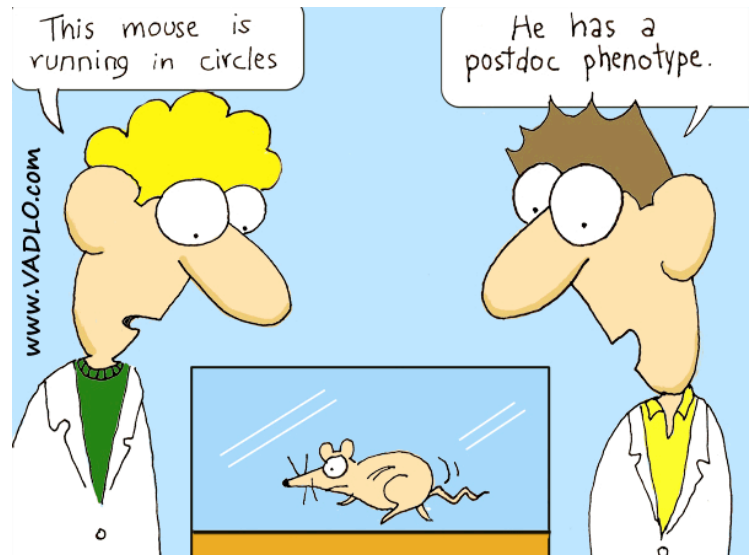
If you are already a member of the ASA, you are able to join the chapter for **free**. Senior astronomers and students are also very welcome to join.

## Who are we?

The chapter constitutes its members, and its activities are organized by a steering committee, which will be elected by the membership. There is currently an interim steering committee in place, which is made up of the following:

- David Parkinson (chair) - University of Queensland
- James Allison - University of Sydney
- Daniel Bayliss - Mt Stromlo Observatory, ANU
- Andy Casey (student representative) - Mt Stromlo Observatory, ANU
- Darren Croton (senior representative) - Swinburne University
- Sarah Martell - Australian Astronomical Observatory (AAO)
- Cathryn Trott - International Centre for Radio Astronomy Research (ICRAR)
- Ivy Wong - CSIRO Astronomy & Space Science division (CASS)

Elections for all of these positions will be held in 2014.



## What will we do?

The steering committee will organize activities to further the goals of the chapter, including:

- Running **workshops** that are focused on the needs of ECRs, which include career development and securing a job. The ASA has previously run one ECR Mentoring workshop, which was held in Port Stephens, NSW in May/June 2012. The next will be held in 2014, and organized by this chapter.
- **Connecting** the ECR community with relevant national and international ECR activities and opportunities. It will do this through its website and email lists, as well as other social media.
- Acting as a resource to which ECRs can turn for information and **support**, as individual needs arise.
- Establishing a **mentoring** network between ECRs and more senior researchers. This is similar to the "Speed meet-a-mentor" sessions held at the ASA meeting each year.
- Fostering a sense of **community** amongst ECRs and encourage the development of a strong ECR support network.

## What can you do to help?

- The chapter is only as strong as its members, so please join, by emailing us at: [asa.ecr.chapter@gmail.com](mailto:asa.ecr.chapter@gmail.com)